

A guide to preparing print-ready files - **Banners**

1. FILE TYPES

Accepted file formats: **.pdf, .tif, .jpg.**



2. CMYK

Files prepared in **CMYK** color space. To receive saturated black: **C:50 M:50 Y:50 K:100**



3. RESOLUTION

1-2 m² 150 ppi
2-5 m² 100 ppi
25-50 m² 50 ppi

Scale **1:1** or scaled proportionally to ordered size.

4. TEXT

All texts in the files must be outlined or converted to **curves**.

5. BLEED AND SAFE AREA



safe area
5 cm

bleed area
0,5 cm

trim line

A guide to preparing print-ready files - **Textiles**

1. FILE TYPES

Accepted file formats: **.pdf, .tif, .jpg.**



2. CMYK

Files prepared in **CMYK** color space. To receive saturated black: **C:0 M:0 Y:0 K:100**



3. RESOLUTION

1-2 m² 150 ppi
2-5 m² 100 ppi
25-50 m² 50 ppi

Scale **1:1** or scaled proportionally to ordered size.

4. TEXT

All texts in the files must be outlined or converted to **curves**.

5. BLEED AND SAFE AREA



safe area
5 cm

bleed area
0,5 cm

trim line

A guide to preparing print-ready files - **Vinyls**

1. FILE TYPES

Accepted file formats: **.pdf, .tif, .jpg.**



2. CMYK

Files prepared in **CMYK** color space. To receive saturated black: **C:50 M:50 Y:50 K:100**



3. RESOLUTION

1-2 m² 150 ppi
2-5 m² 100 ppi
25-50 m² 50 ppi

Scale **1:1** or scaled proportionally to ordered size.

4. TEXT

All texts in the files must be outlined or converted to **curves**.

5. BLEED AND SAFE AREA



safe area
5 cm

bleed area
0,5 cm

trim line

A guide to preparing print-ready files - **Boards**

1. FILE TYPES

Accepted file formats: **.pdf, .tif, .jpg.**



2. CMYK

Files prepared in **CMYK** color space. To receive saturated black: **C:50 M:50 Y:50 K:100**



3. RESOLUTION

1-2 m² 150 ppi

2-5 m² 100 ppi

25-50 m² 50 ppi

Scale **1:1** or scaled proportionally to ordered size.

4. TEXT

All texts in the files must be outlined or converted to **curves**.

5. BLEED AND SAFE AREA



safe area
5 cm

bleed area
0,5 cm

trim line

A guide to preparing print-ready files - Papers

1. FILE TYPES

Accepted file formats: .pdf, .tif, .jpg.



2. CMYK

Files prepared in **CMYK** color space. To receive saturated black: **C:50 M:50 Y:50 K:100**



3. RESOLUTION

1-2 m² 150 ppi
2-5 m² 100 ppi
25-50 m² 50 ppi

Scale **1:1** or scaled proportionally to ordered size.

4. TEXT

All texts in the files must be outlined or converted to **curves**.

5. BLEED AND SAFE AREA



safe area
5 cm

bleed area
0,5 cm

trim line

A guide to preparing print-ready files - Feather Flags

1. TEMPLATE

Graphic file should be prepared on a **template**, which is available to download on the product page.

2. FILE TYPES

Accepted file formats: **.pdf, .tif, .jpg**.



3. CMYK

Files prepared in **CMYK** color space. To receive saturated black: **C:0 M:0 Y:0 K:100**



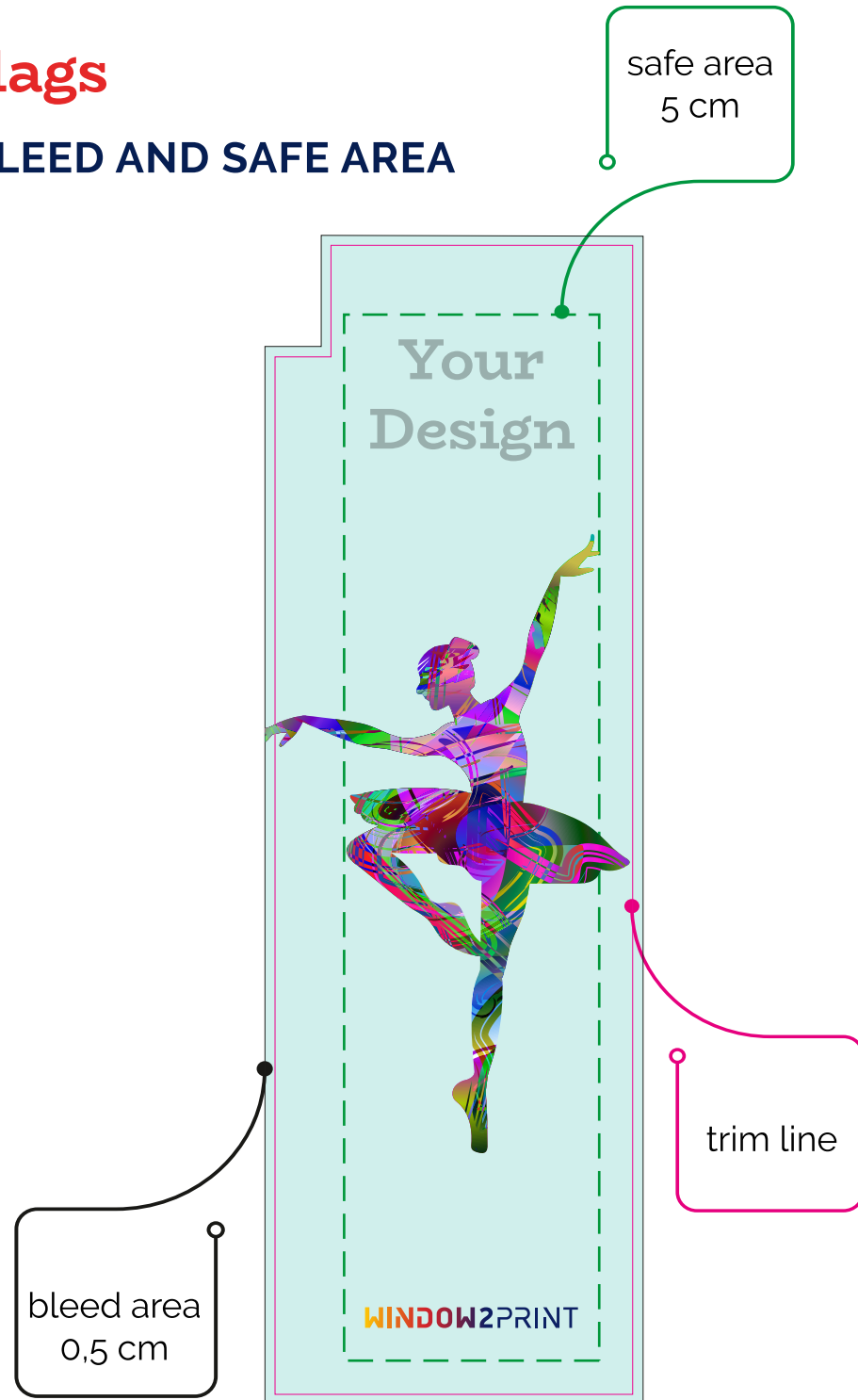
4. RESOLUTION

100 ppi
Scale **1:1**

5. TEXT

All texts in the files must be outlined or converted to **curves**.

6. BLEED AND SAFE AREA



A guide to preparing print-ready files - Roll Up Stands

1. TEMPLATE

Graphic file should be prepared on a **template**, which is available to download on the product page.

2. FILE TYPES

Accepted file formats: **.pdf, .tif, .jpg.**



3. CMYK

Files prepared in **CMYK** color space. To receive saturated black: **C:50 M:50 Y:50 K:100**



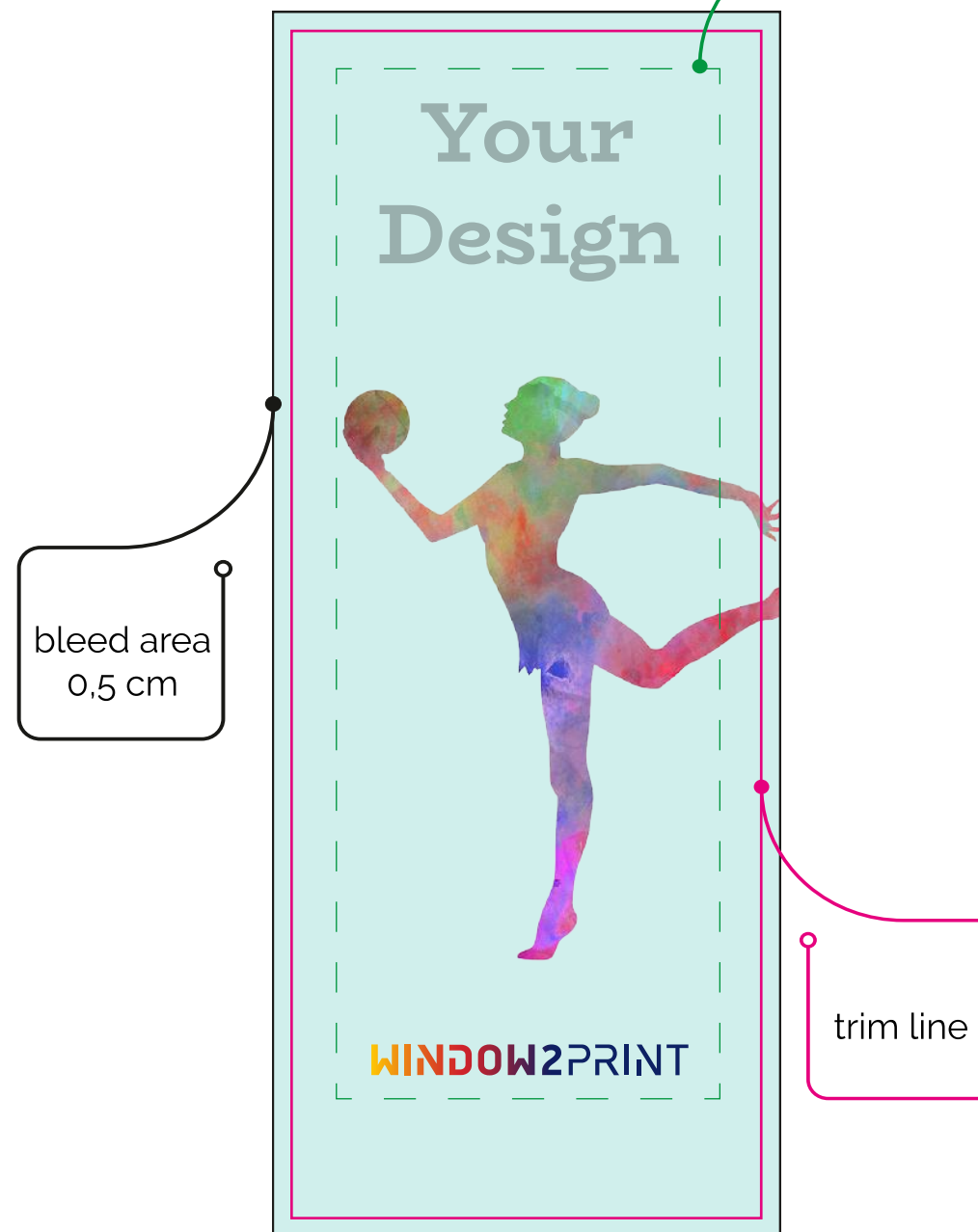
4. RESOLUTION

150 ppi
Scale **1:1**

5. TEXT

All texts in the files must be outlined or converted to **curves**.

6. BLEED AND SAFE AREA



A guide to preparing print-ready files - **X-Banner**

1. DIMENSIONS

The file for X-banner should be prepared in the same size as the final product: **60 x 160cm** or **80 x 180cm** according to the size of the product you chose.

2. FILE TYPES

Accepted file formats: **.pdf, .tif, .jpg**.



3. CMYK

Files prepared in **CMYK** color space. To receive saturated black: **C:50 M:50 Y:50 K:100**



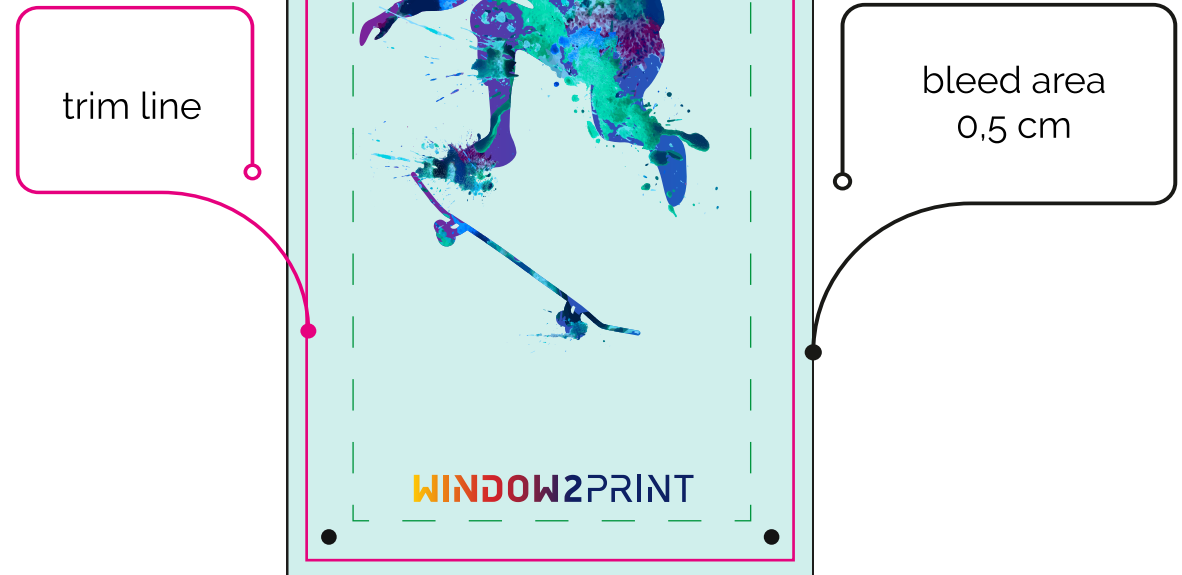
4. RESOLUTION

150 ppi
Scale **1:1**

5. TEXT

All texts in the files must be outlined or converted to **curves**.

6. BLEED AND SAFE AREA



A guide to preparing print-ready files - **Exhibition Stands**

1. TEMPLATE

Graphic file should be prepared on a **template**, which is available to download on the product page.

2. FILE TYPES

Accepted file formats: **.pdf, .tif, .jpg**.



3. CMYK

Files prepared in **CMYK** color space. To receive saturated black: **C:0 M:0 Y:0 K:100**



4. RESOLUTION

100 ppi
Scale **1:1**

5. TEXT

All texts in the files must be outlined or converted to **curves**.

6. BLEED AND SAFE AREA



safe area
5 cm

bleed area
0,5 cm

trim line

A guide to preparing print-ready files - POS displays

1. TEMPLATE

Graphic file should be prepared on a **template**, which is available to download on the product page

- The template **cannot be scaled** or otherwise interfered with its dimensions. It is also forbidden to rotate, remove, add and in any way change the elements of the cut/punch
- The print file should be applied (as simple as possible and grouped) on a separate layer (called "**your graphics**") of our template

2. FILE TYPES

Accepted file formats: **.pdf**



3. CMYK

Files prepared in **CMYK** color space. To receive saturated black: **C:50 M:50 Y:50 K:100**



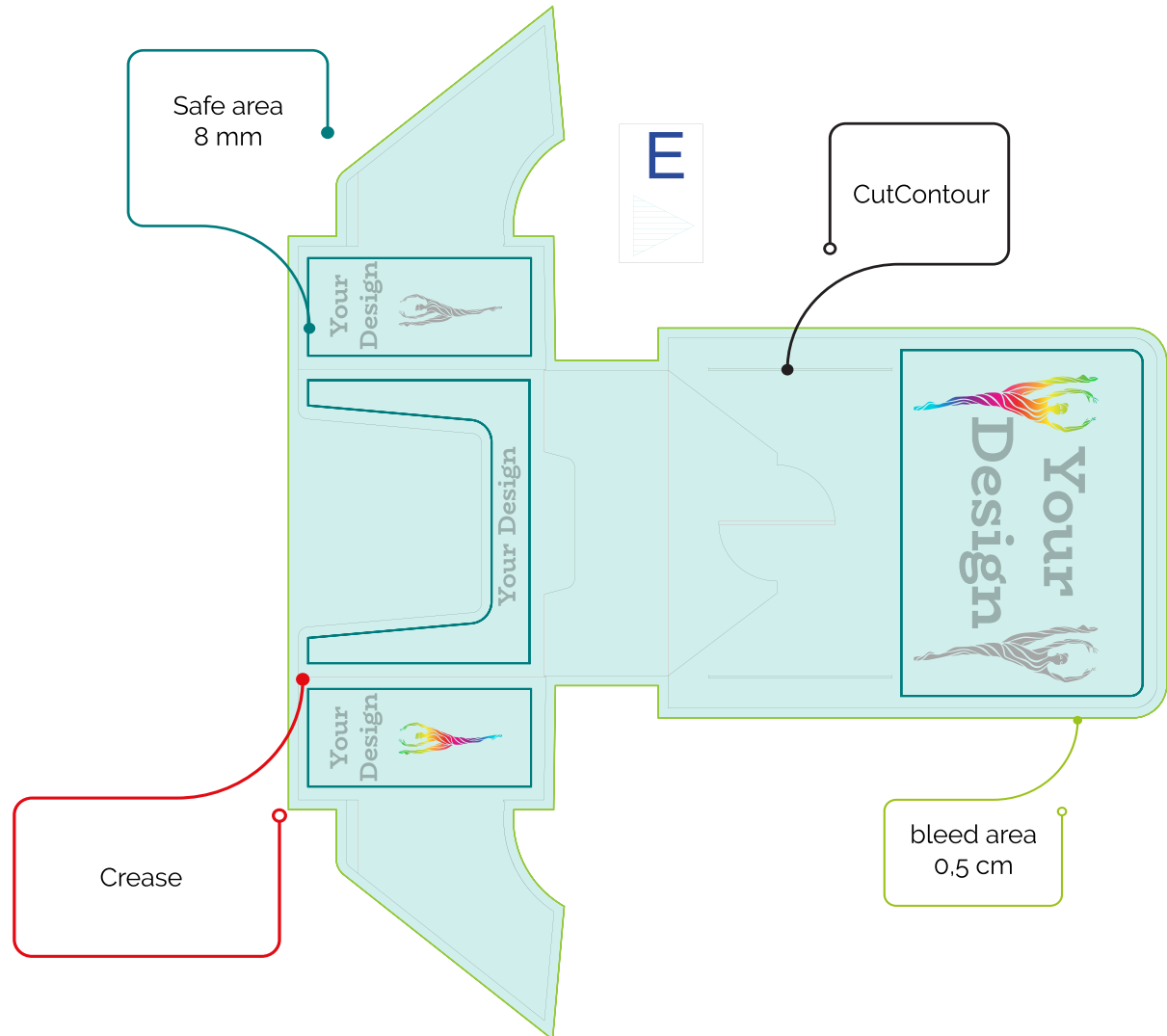
4. RESOLUTION

100-200 ppi | Scale 1:1

5. TEXT

All texts in the files must be outlined or converted to **curves**
Minimum font size **8 pt**
The minimum height is **2mm**

6. BLEED AND SAFE AREA



A guide to preparing print-ready files - **Wind Screen**

1. TEMPLATE

Graphic file should be prepared on a **template**, which is available to download on the product page.

2. FILE TYPES

Accepted file formats: **.pdf, .tif, .jpg**.



3. CMYK

Files prepared in **CMYK** color space. To receive saturated black: **C:0 M:0 Y:0 K:100**



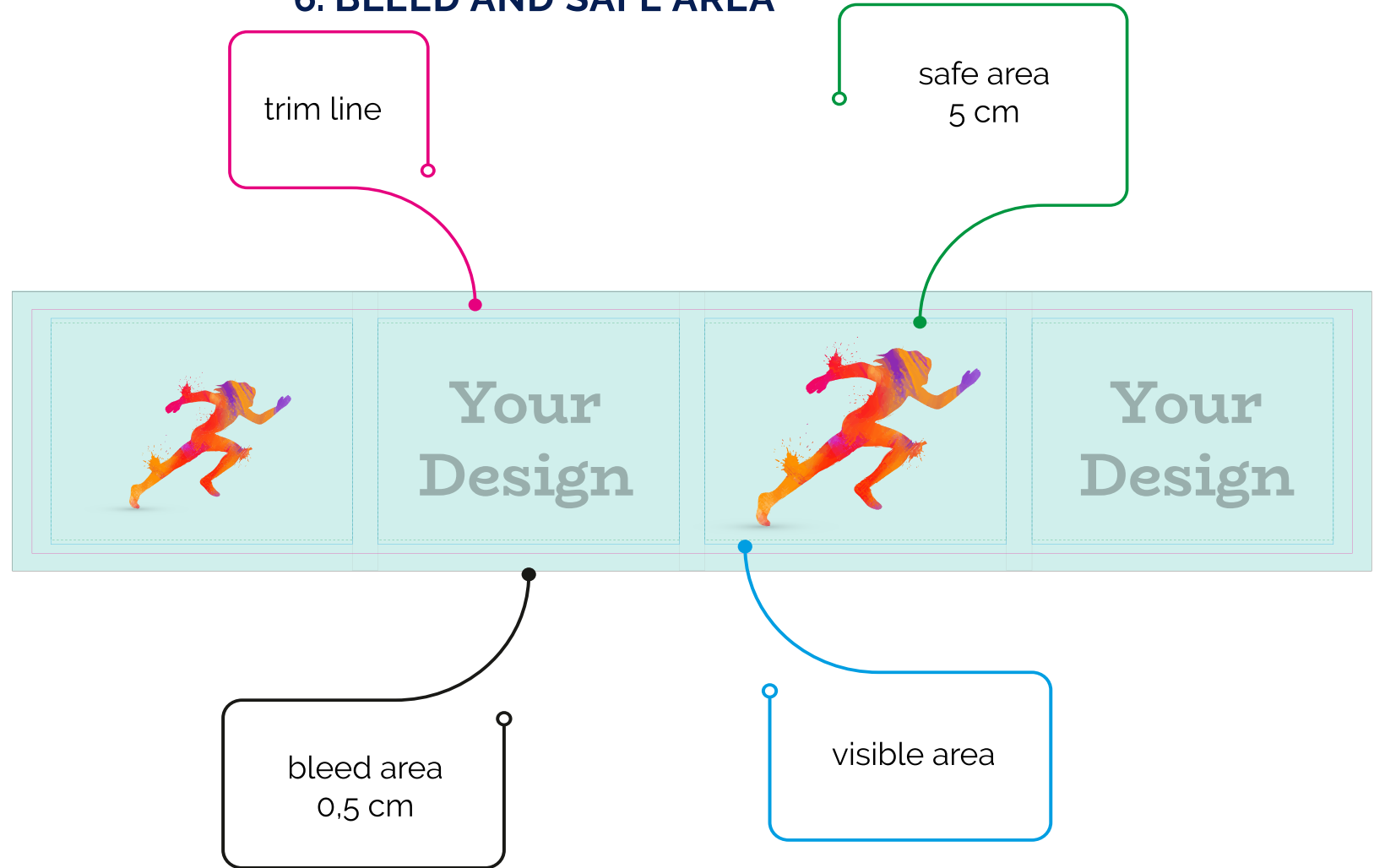
4. RESOLUTION

100 ppi
Scale **1:1**

5. TEXT

All texts in the files must be outlined or converted to **curves**.

6. BLEED AND SAFE AREA



trim line

safe area
5 cm

bleed area
0,5 cm

visible area

A guide to preparing print-ready files - **Director's Chair**

1. TEMPLATE

Graphic file should be prepared on a **template**, which is available to download on the product page.

2. FILE TYPES

Accepted file formats: **.pdf, .tif, .jpg**.



3. CMYK

Files prepared in **CMYK** color space. To receive saturated black: **C:0 M:0 Y:0 K:100**



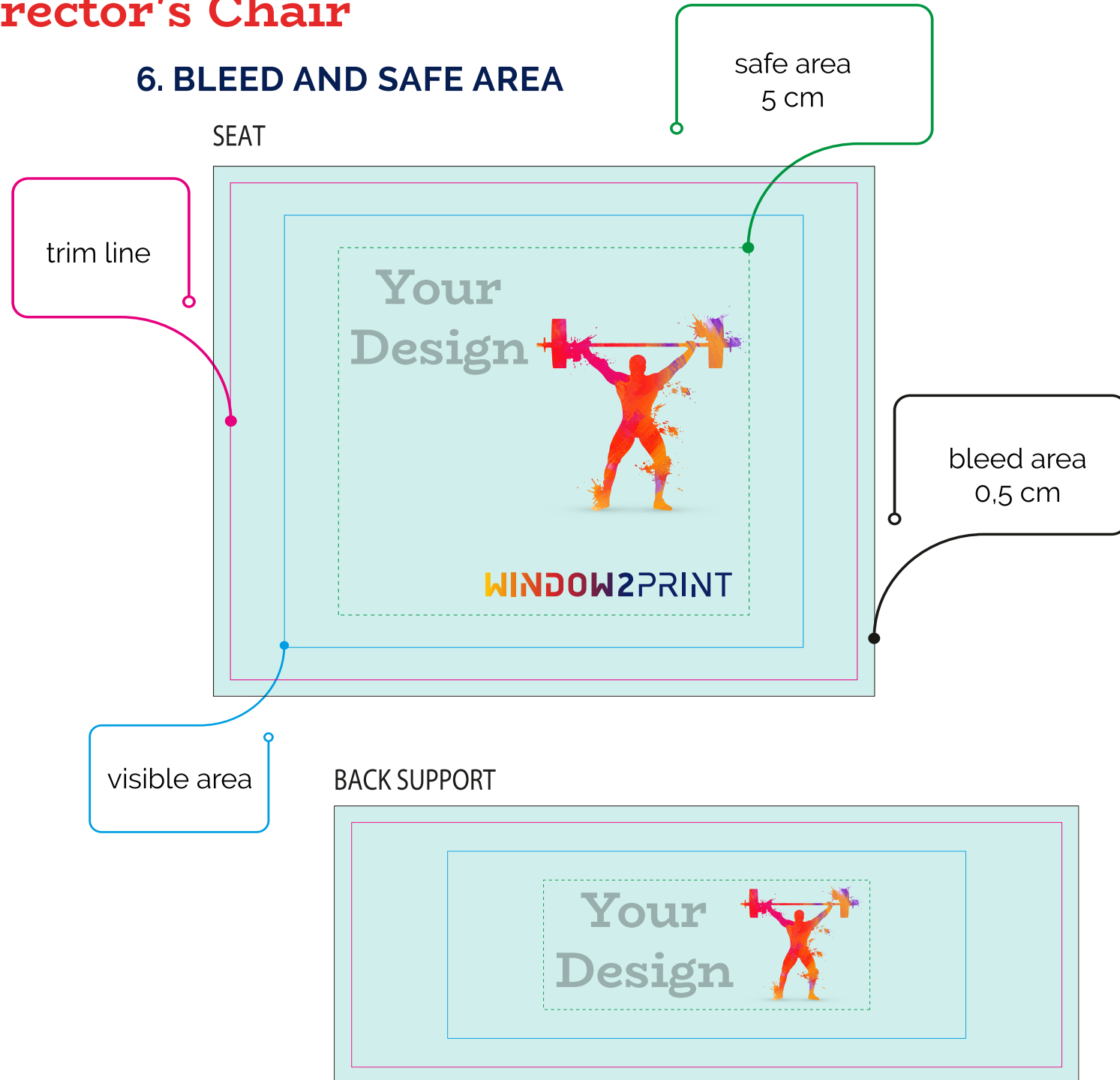
4. RESOLUTION

150 ppi
Scale **1:1**

5. TEXT

All texts in the files must be outlined or converted to **curves**.

6. BLEED AND SAFE AREA



A guide to preparing print-ready files - Deckchairs

1. TEMPLATE

Graphic file should be prepared on a **template**, which is available to download on the product page.

2. FILE TYPES

Accepted file formats: **.pdf, .tif, .jpg**.



3. CMYK

Files prepared in **CMYK** color space. To receive saturated black: **C:0 M:0 Y:0 K:100**



4. RESOLUTION

100 ppi
Scale **1:1**

5. TEXT

All texts in the files must be outlined or converted to **curves**.

6. BLEED AND SAFE AREA



A guide to preparing print-ready files - **Tent**

1. TEMPLATE

Graphic file should be prepared on a **template**, which is available to download on the product page.

2. FILE TYPES

Accepted file formats: **.pdf, .tif, .jpg**.



3. CMYK

Files prepared in **CMYK** color space. To receive saturated black: **C:0 M:0 Y:0 K:100**



4. RESOLUTION

72 ppi
Scale **1:1**

5. TEXT

All texts in the files must be outlined or converted to **curves**.

6. BLEED AND SAFE AREA

